



60. YEARS **Baladi**
F R E R E S S A L





From a garage that measured 12 by 15 feet in 1945 JCB's world headquarters is one of the finest engineering factories in Europe that now employs over 6,000 people, sells in over 150 countries and produces over 250 products that are mainly:



- The famous JCB backhoe loader from a load capacity of 0.25 m³ with 20 Hp up to 1.3 m³ with 100 Hp
- The wheel loading shovels up to an operating weight of 24 t with 290 Hp
- The tracked excavators up to an operating weight of 46 t
- The wheeled excavators up to an operating weight of 20 t
- The skid steer loaders up to an operating weight of 4,400 Kg
- The telescopic handlers up to a lifting capacity of 6 t at 20 m
- Rotating telehandlers with 360 degree flexibility up to a height of 25.5 m and a lifting capacity of 5.5 t
- The rough terrain forklifts and teletruck with a lift capacity up to 3.6 t at 9 m
- The JCB Vibromax roller compactors up to an operating weight of 19.7 t and a centrifugal force of 55 KN
- The JCB generator sets from 15 up to 1,000 KVA
- The agricultural tractors up to 178 Hp
- The ground care items

Great ideas, brilliant engineering solutions, reliable back-up, they all combine to create a guaranteed JCB worldwide performance standard.





Wherever concrete is produced and building blocks of the world are moved that is where you find the Schwing Group; everywhere and always on hand when our world is undergoing change. From Germany to over 100 countries in the world Schwing delivers the best quality concrete pumping equipment:

- Stationary concrete pumps with a concrete pressure up to 201 bars
- Truck mounted concrete pumps with booms up to 65 m
- Concrete placing booms up to a 50 m reach
- Truck mixers pumps with 26 m booms
- Wet shotcreting and sludge pumps



Stetter truck mixers were launched in 1958 and the Stetter Mixing plant introduced to meet with the Din 1045 standards, and, right from the start Stetter pointed the way for the whole industry and have concentrated on handling and minimizing costs in maintenance and service:

- Concrete truck mixers up to a capacity of 15 m³ of compacted concrete
- Concrete mobile and stationary mixing plants up to 150 m³/h
- Recycling plants up to a capacity of 12 m³/h
- Ice plant up to 88t per 24h
- Chilled water plant up to 372 m³ per 24h.





Since its establishment in 1987 in Ankara, MEKA has built one of the largest concrete equipment manufacturing setups with its 30 engineer, 300 staff and a production area of 53,000 m² split over three regions. With its ISO 9001 Quality Certificate since 1998, high quality products and manufacturing as per the European Standards and CE norms, MEKA was given CE certificate by TUV in the field of the manufacturing and installation of concrete plants. Meka's customer oriented strategy allows it to provide full satisfaction to its customers with design, delivery, batch production, quality in production, labor, assembling, and training and after-sale services. This strategy allowed MEKA to succeed not only in Turkey but also abroad where MEKA has become a well-known concrete plant manufacturer in more than 60 countries.

Lately MEKA started the manufacturing of crushing and screening plants and is working hard to design and manufacture high quality products that would allow it to succeed in this new market segment.

MEKA CONCRETE BATCHING PLANTS



KAESER KOMPRESSOREN is one of the world's leading suppliers of compressors and air technology.

Founded in 1919, KAESER products are in use in every industry in companies of all sizes with the following complete range:

Reciprocating compressors:
Capacities from 60 l/min to 1400 l/min

Pressures from 7 bar (g) to 35 bar (g)

Motor sizes from 0.75 kW to 18.5 kW

Screw compressors:

Capacities from 0.26 m³/min to 83.4 m³/min, pressures from 5 bar (g) to 15 bar (g), motor sizes from 2.2 kW to 500 kW

Blowers:

Capacities from 4.8 m³/min to 93.1 m³/min, pressures from 300 mbar to 1,000 mbar, motor sizes from 4.8 kW to 250 kW

In addition Kaeser can supply refrigeration, desiccant and membrane type dryers to suit all applications as well as full and comprehensive range of filtration.

Kaeser also has energy saving compressor management systems to ensure optimum operating conditions for any compressor and blower installation.

Also available for booster compressor stations for HP applications such as PET.

KAESER COMPRESSORS





With the first factory established in 2000, producing Light & Concrete equipment for well-known brands for 10 years, the MASTERPAC brand was launched in 2009:

- Strategically positioned in the quadrant of high quality and reasonable price for professional markets worldwide.
- Taking the advantages of edge-cutting design and technology generated from German R&D team every step of the way.
- Providing our customers with all the benefits of well-trained Chinese labor and western industry know-how.

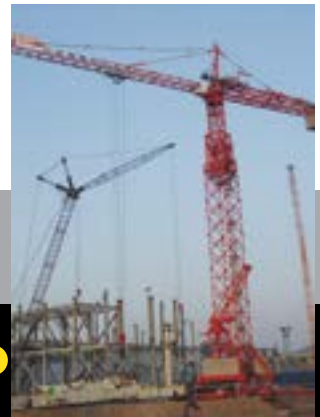
MASTERPAC®
Professional Compaction



As an army-owned company, SCM developed extensive skills since 1952 in the production of steel structure and introduced in 1984 the Potain Technology to produce the Potain Topkit design tower cranes F0/23 and H3/36 that were officially accepted by Potain in 1989.

It now fully absorbed the Potain technology and extended it to all its line of products that are:

- Tower cranes with jibs from 40 to 80 m and maximum capacities up to 63 t.
- Luffing jib cranes with a reach from 35 to 60 m maximum capacities up to 32 t.
- Passenger hoists with single or double cabin and a capacity of 1 to 2 t.





Fallprotec S.A. was founded in 2004 by two specialists in Height Safety Products and Safe Access Solutions with more than 25 years of experience in the business.

With its headquarters in Luxembourg and offices in Barcelona, Cologne and Shanghai, opening of further international liaison offices planned for the coming years the company has a worldwide marketing approach through 50 official resellers on 5 continents. The main reasons for the success of Fallprotec are the high level of their engineering knowledge and experience to provide bespoke solutions as well as the unique commercial strategy of market segmentations.

The complete range of products from Fallprotec S.A. is manufactured in accordance with European and US standards, and all products have certifications issued by independent notified bodies.



GinD is a Spanish company with worldwide deployment specialized in the design, manufacture and installation of customized Gondolas that are Building Maintenance Units (BMU) to facilitate the maintenance of the facades with the highest safety standards. The main product we design and manufacture are Gondolas (Building maintenance units, BMU).

GinD SJ

The single jib BMU that allow any reach can be equipped with any of the options required by building architecture.

GinD DJ

The double jibs DJ, is the most widely used model and enables us to reach up to 7-8 meters approx.

GinD MRT

The MRT's are self-powered platforms used to reach a façade or the ceiling in buildings where the access to roof deck is not feasible or where the building is covering a huge surface such as high lobbies or airports

GinD Gantries

The Gantries that are mainly steel platforms designed for one or more workers with width and length that are determined depending on the specifications of each project





From the Güldner-Motoren GmbH in Munich that was founded in 1904 to the Hydraulic Division that launched the first forklift truck with a hydrostatic transmission in 1958 Linde's technologically leading products and comprehensive range of services create the best conditions for successful business development and strong position as a leading supplier in all fields of intralogistics:

- Electrical counterbalance trucks with capacities between 1 and 8 t
- Diesel and gas counterbalance trucks with capacities between 1.2 and 8 t
- Heavy forklifts with capacities between 10 and 52 t
- Container handlers with capacities between 8 and 45 t
- Side loaders with capacities between 3 and 6 t
- Explosion proofs trucks
- Hand pallets with a capacity of 2.5 t
- Pallet trucks with capacities between 1.6 and 3 t
- Order pickers
- Pallet slackers with capacities between 1 and 1.6 t
- Reach trucks with capacities between 1 and 2.5 t and up to 14.95 m height
- Narrow aisles trucks with capacities between 1 and 1.5 t and up to 17 m height
- Tow tractors with a towing capacity from 3 to 25 t





Founded in 1958 Anhui Heli Forklift Trucks Group is becoming one of the major players in its field, with its Nr 8 world ranking, 80,000 units sold yearly in 135 different countries, 7,000 employees and factories spread over around 1.7 million square meters. It covers the main business of Industrial vehicles, heavy-duty forklifts, construction machinery and cast iron parts. Today, HELI is the biggest manufacturing and exporting manufacturer of forklifts in China and has been listed since 1996 on the Shanghai stock exchange, which makes it the only company coming into the stock market in Chinese forklift industry.

HELI

LIFTING THE FUTURE



CONTROLS was founded in Milan in 1968 with the aim to manufacture and distribute testing instruments, machines and systems for the construction industry and civil engineering and today is the major world producer of testing equipment.

Many are the reasons of CONTROLS success: quality, efficiency, competitive costs, quick answer and first class service to the customers. All this has been achieved by a modern industrial organization and a dynamical production system, as well as a versatile management by processes of all the activities and a severe internal checking.

The CONTROLS wide range of equipment includes thousands of products which can be divided into 3 main Business Units:

- Concrete Technology: testing on concrete and cements
- Road Testing: on asphalts, bituminous and pavements surface

CONTROLS S.R.L. is certified ISO 9001:2008 and since 1996 CONTROLS has been accredited as a Calibration Centre SIT n°092 for compression testing machines.

CONTROLS

Your Partners
Masters of Technology





WF Wykeham Farrance Since 1941
PIONEERS IN ADVANCED SOIL TESTING

Soil Mechanics Testing by
WYKEHAM FARRANCE, the
Soil Mechanics **Division of**
Controls Group.



Snorkel Powered Access:
 Founder of the Modern Access Industry since 1946 that started with the aluminum scaffold with adjustable legs then in 1972, opened a new factory to produce the "Flying Carpet" scissor lift.



Today Snorkel produces:

- Scissor lifts up to a working height of 32 feet
- Speed levels up to a working height of 30 feet
- Trailer mounted access platforms up to a reach of 50 feet
- Self propelled and rough terrain boom lifts up to a reach of 48 feet
- Push around access platforms up to a working height of 46 feet



Founded by Massey Harris, who produced the first self-propelled combine in 1938 and Harry Ferguson, who invented the three point linkage, Massey Ferguson was created in 1953 bringing together the twin skills in harvesting machinery and tractor design to produce one of the world's most powerful forces in farm equipment.

It now has one of the most extensive range of agricultural tractors combines and implement to suit all the farming needs:

- Strong and simple tractors from 38 to 40 Hp
- Hard working tractors from 46 to 165 Hp
- High productivity and technology tractors from 90 to 315 Hp
- Vineyards, orchards, nurseries, greenhouse and municipal 64 to 98 Hp
- Combine harvesters up to 168 Hp with 5,000 liters grain tanks
- Round and square balers
- Implements for all the farming needs



MASSEY FERGUSON





SYSTEMS SUNLIGHT S.A. is a global player in the field of integrated energy solutions, specializing in the development, production and marketing of batteries and energy storage systems for industrial, advanced technology and consumer applications.



Established in 1910, Antonio Carraro has evolved into a global frontrunner in crafting compact tractors tailored for specialized agricultural needs, including vineyards, orchards, narrow terrains, and civil maintenance tasks.



Over the years, Baladi Freres s.a.l. has supplied numerous reliable used equipment, often with limited warranties or after sales contracts...



Indoor Service



Overhauling



Field Service



Batching Plant Erection & Commissioning



Tower Crane & Hoist Erection



Placing Boom Erection with Special Steel Structure Design



Laboratory Commissioning & Calibration



BMU Design & Erection



Keep it Working Right, Buy Genuine Parts



Our strong position in Lebanon, along with the trust placed in us by contractors, warehousing and ready-mix companies, industrialists, and farmers, is not just a result of our talented sales team and extensive product selection, but primarily due to our unwavering commitment to customer service.

We prioritize personalized attention for each customer, offering expert guidance to ensure seamless service delivery and maximum productivity.

Our clients enjoy hassle-free, value-enhancing relationships with us, fostering a sense of loyalty that they readily demonstrate.



Beirut Head Office:

Dora Boulevard Nr. 105, Succar building, Beirut
P.O.Box 90 - 1191 Jdeidet El Metn, Metn 1202 2090 Lebanon

Tel: +961 1 898 897 • Fax: +961 1 884 010

Email: mail@baladifreres.com

www.baladifreres.com



Beirut Sales & Service:

Boulevard Dora,

Tel: +961 1 898 897 • +961 3 688 061

Email: sales@baladifreres.com

Gharzouz, Industrial area

Tel: +961 3 674 132